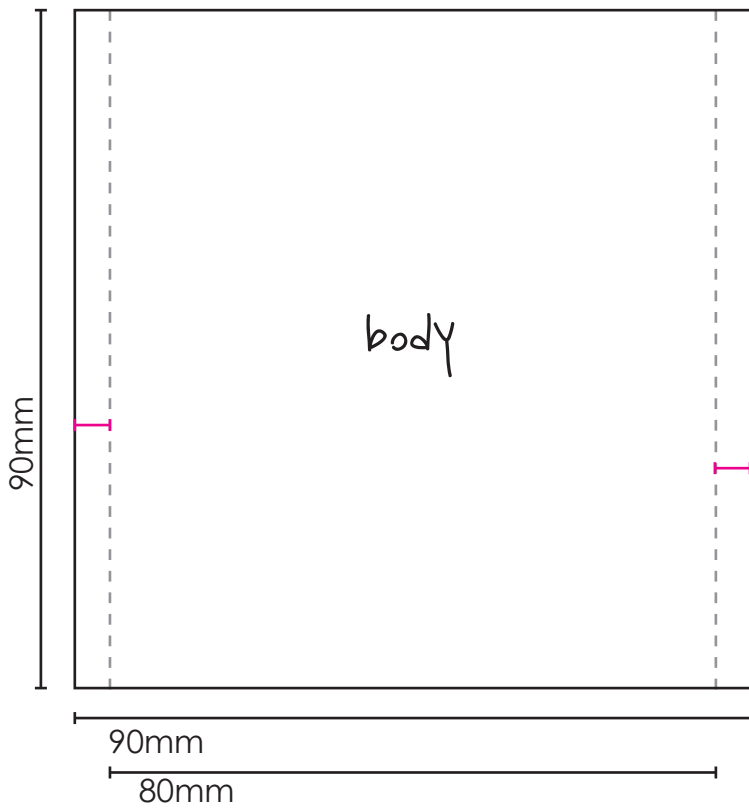
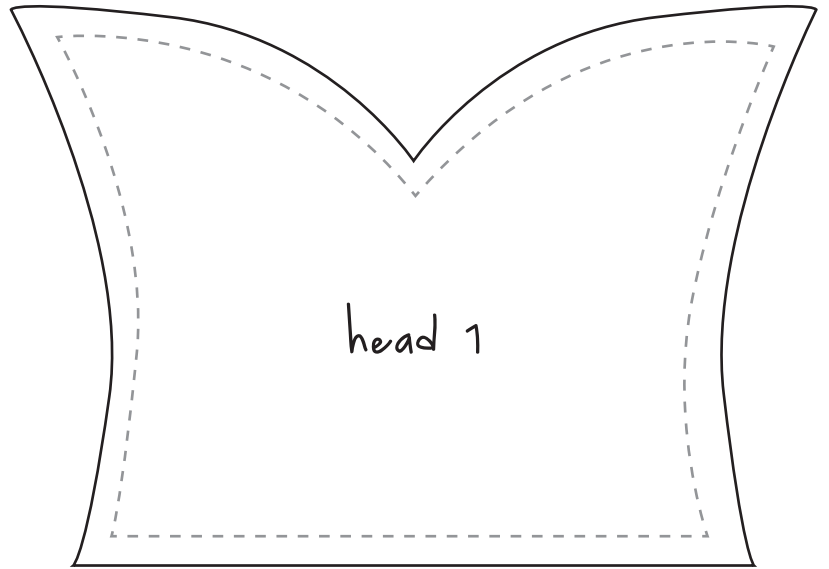
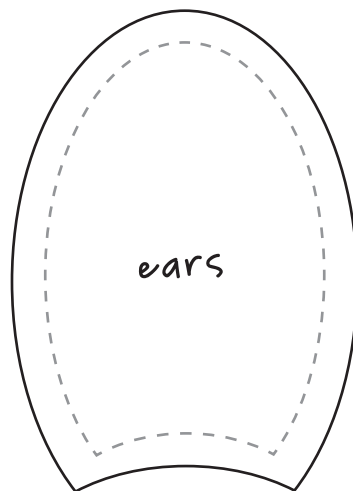
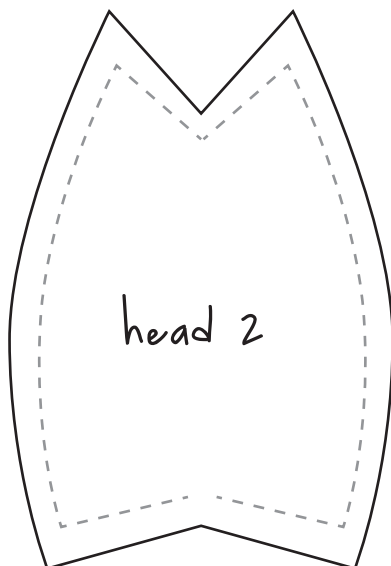
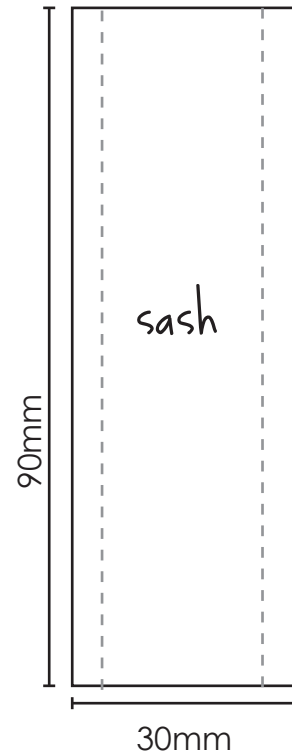


# PATTERN

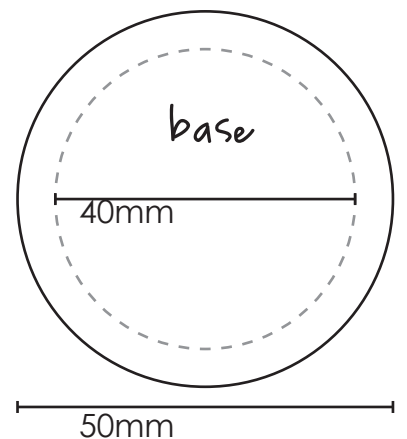
## BUNNY BUDDY for baby



Note: leave approx 5mm for seam allowance on every shape in the pattern



you need 4 pieces of fabric in this shape to make 2 ears



## getting started

Trace the shapes from the pattern onto your chosen fabric. Cut each shape out.

Thread a needle with your chosen colour cotton. We used a basic running stitch throughout the project.

## steps

### body and base

1. Sew the body together: with right sides facing bring two edges of the fabric together to create a cylinder shape, leaving about 5mm for seam allowance.
2. Stitch the base circle to the body, inside out, also leaving about 5mm seam allowance
3. Turn right side out and set body and base aside

### ears

1. You need four pieces of the ear shape. Layer two together, right sides facing, and stitch. We used a different colour fabric for the inside and outside of each ear.
2. Reverse the ears. Fold bottom corners of each ear to touching, and secure with a few stitches. See Figure E1.

figure E1

Fold ear corners together like this ----> and secure with a few stitches



### head

1. Thread a long piece of cotton onto your needle, approx 40cm long. Align head 1 and head 2 together, as in figure H1.
2. Stitch together, right sides facing, starting at start point indicated.
3. Stop to tuck in ear, and stitch it into the seam as you continue to sew the head pieces together.
4. Sew down the back of the rabbit's head, as in Figure H2. Continue the same stitch, sewing back the way you just sewed, and continuing to sew the front of the face edges together. See figure H3. Tie off thread.
5. Sew the last side of the head together. Remembering to affix the ear in the desired spot.

(continued over)

figure H1

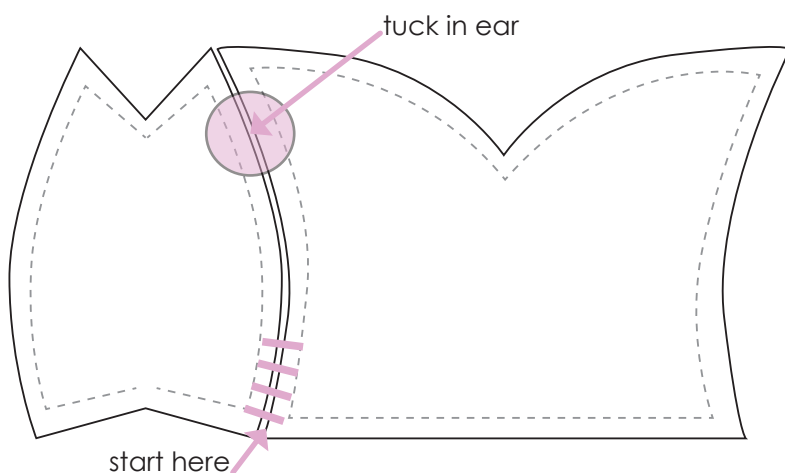


figure H2

enclose back of head

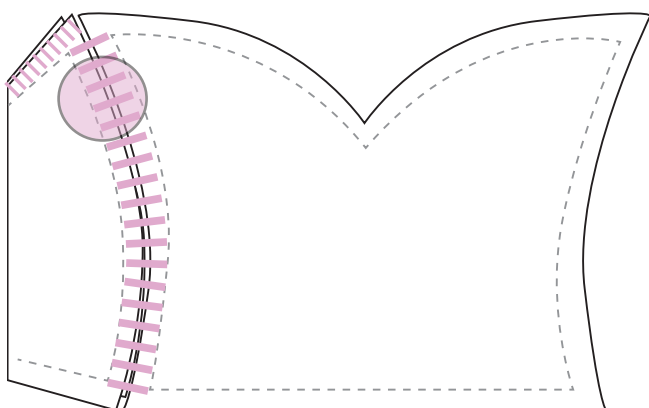
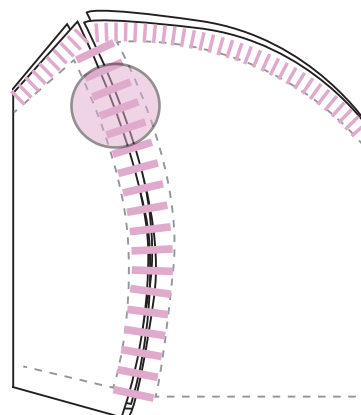


figure H3



### head (continued)

7. Invert newly stitched together head shape, to turn right way out.
8. Thread your heavier cotton onto a needle to stitch your eyes and nose. Push the needle through the rabbit's nose from the inside of the fabric and make a few stitches until you're happy with the shape you've created for the nose. Tie off cotton.
9. Now stitch some eyes on, the same way as you did the nose. Tie off the cotton after each eye. You should now have something resembling figure H4.

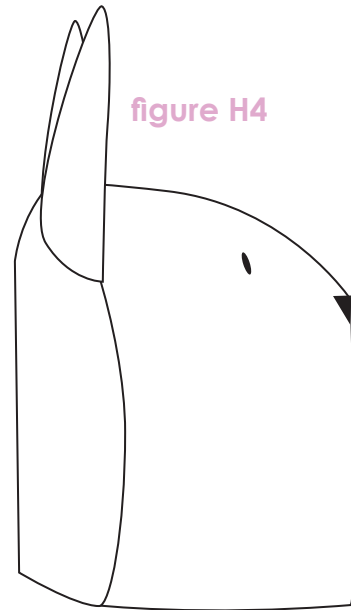


figure H4

### attaching head to body

1. Stitch the head to the base cylinder.
2. Don't worry if stitching gets messy because the sash will cover it.

### sash

1. Fold sash shape so edges meet right sides together, and stitch.
2. Invert sash and wrap around bunny's neck. This will cover the stitches you made when attaching the head to the body.
3. Affix sash at the back of the bunny with some stitches, so it sits tightly around bunny's neck.

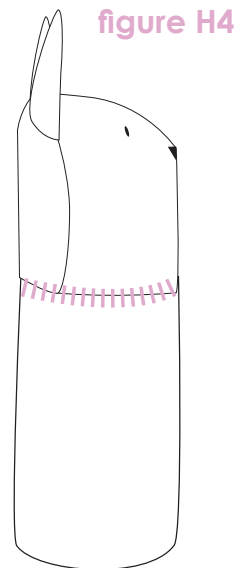


figure H4

